



64, Chiswick High Road, London, W4 1SY

Guide Price £600,000

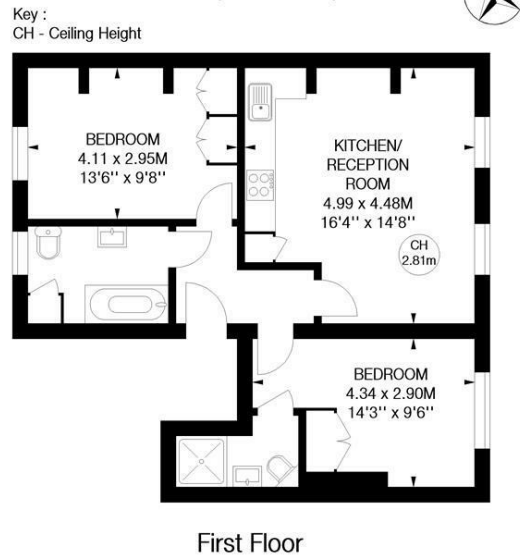
**WHITMAN & CO.**

SALES · LETTINGS · COMMERCIAL

- Immaculate two bed/two bath apartment
- Secure gated allocated parking
- Desirable period building in the heart of Chiswick
- Bright and spacious south facing reception room
- Wood floors throughout
- No onward chain

Tenure - Leasehold  
 Lease length - 192 years remaining  
 Ground rent - £400 pa  
 Service charge - £1950 pa  
 Local authority - Hounslow  
 Council tax - Band E

**Burlington House,  
 Chiswick High Road, W4**  
 Approximate gross internal area  
 59.18 sq m / 637 sq ft

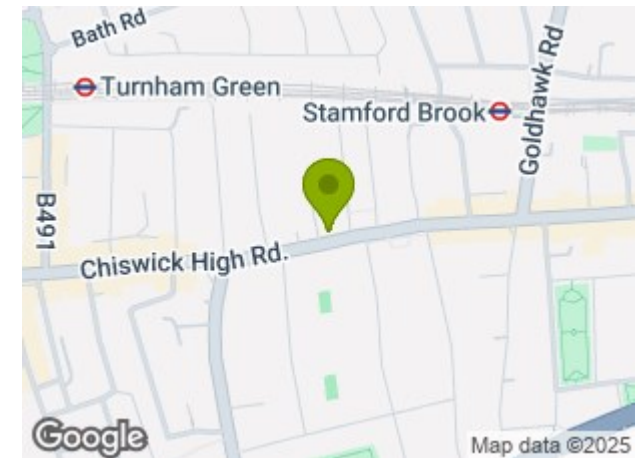


Not to scale, for guidance only and must not be relied upon as a statement of fact.  
 All measurements and areas are approximate only

## THE PROPERTY

An immaculately presented two bed/two bath first-floor apartment situated in this imposing period building with secure gated access located moments from Chiswick High Road's extensive facilities. The accommodation provides a spacious and bright reception room with an open plan fully fitted kitchen, wood flooring and two large sash windows, two double bedrooms with wood flooring and fitted custom-built wardrobes, a luxury main bathroom and further en-suite shower room, underfloor heating and private secure parking space. The flat is in a highly desirable location a few steps from Chiswick High Road's shops, cafes and restaurants. Transport links include both Turnham Green and Stamford Brook tube stations, numerous local bus routes and the A4/M4 for routes in and out of London. No onward chain.

## SITUATION



5-7 Turnham Green Terrace, Chiswick, London, W4 1RG

Tel 020 8747 8800

E-mail [sales@whitmanandco.com](mailto:sales@whitmanandco.com)

Website [www.whitmanandco.com](http://www.whitmanandco.com)